

## Schedule 1

### Item 1 Description of Agreement Area

#### A. External boundary description

The agreement area covers all the land and waters within that part of Lot 5 on SP126466 (Kyeenee Pastoral Holding) located within the Native Title Determination Application QUD80/2009 Kullilli People (QC2009/001), further described as that part of that lot west of the line described by the following coordinate points:

Longitude ° East	Latitude° South
144.386509	27.599205
144.317073	27.686700
144.317077	27.687880
144.316390	27.694982

#### Note

##### Data Reference and source

- Agreement boundary data compiled by National Native Title Tribunal based on data sourced from Department of Natural Resources and Mines Qld (August 2013).
- Cadastre data sourced from Department of Natural Resources and Mines Qld (August 2013).

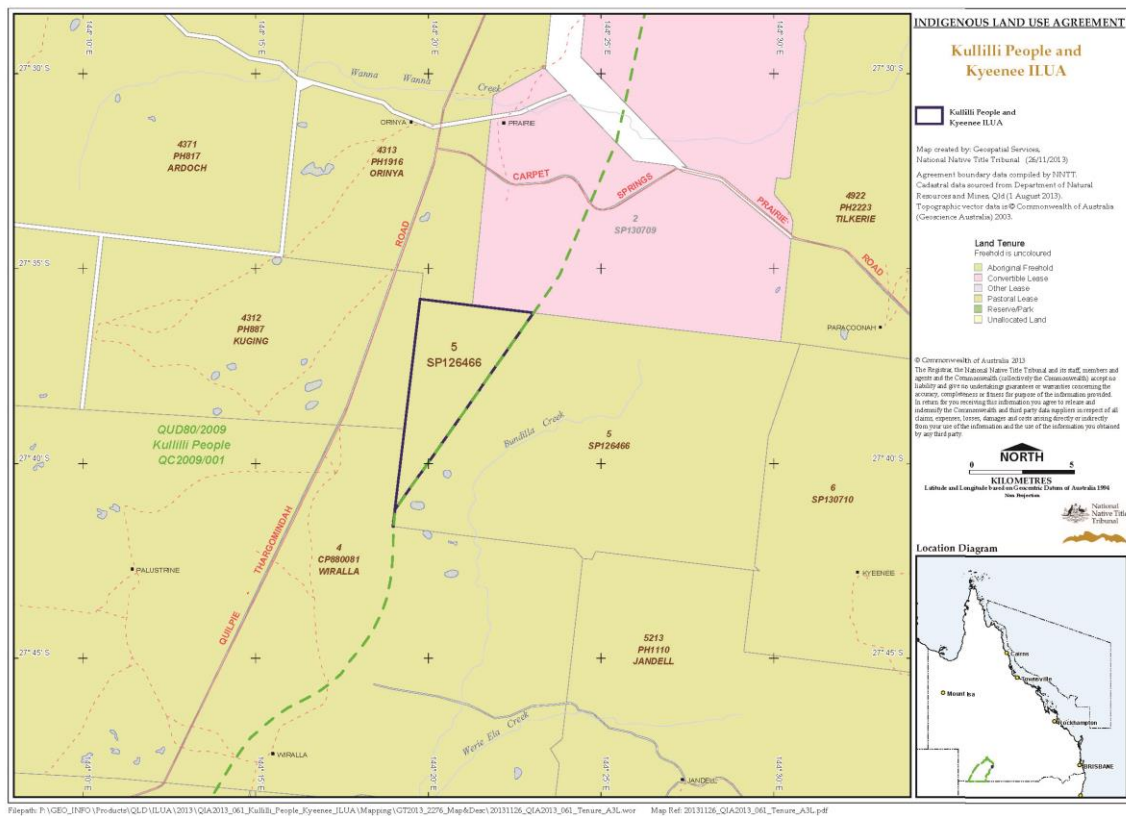
##### Reference datum

Geographical coordinates have been provided by the NNTT Geospatial Services and are referenced to the Geocentric Datum of Australia 1994 (GDA94), in decimal degrees and are based on the spatial reference data acquired from the various custodians at the time.

##### Use of Coordinates

Where coordinates are used within the description to represent cadastral or topographical boundaries or the intersection with such, they are intended as a guide only. As an outcome to the custodians of cadastral and topographic data continuously recalculating the geographic position of their data based on improved survey and data maintenance procedures, it is not possible to accurately define such a position other than by detailed ground survey.

**B. Map**



- Item 2 Description of Lease**  
 Preferential Pastoral Holding 215419 comprising Lot 5 on SP126466
- Item 3 Description of Lessee**  
 Brian Sidney Betts, Jill Elizabeth Betts and Brian John Betts